

Combi Gauges for Rail Cars

With one measuring unit

RChg
125 – 1Fz

Application

Pressure gauges model RChg 125 – 1 Fz rBFr are applied in rail cars, especially for air brake systems.

The instruments are provided with u-clamps for panel mounting and with direct and indirect lighting as combi gauges.

Standard Version

Accuracy

Class 1.0

Position of Installation

90°

Case

Stainless steel 304 (1.4301)
with crimped-on ring, aluminum, black anodised

Temperature Limitation

Storage temperature: -40 °C to +70 °C (-40 °F to +158 °F)
Ambient temperature: -40 °C to +60 °C (-40 °F to +140 °F)
Medium temperature: max. +60 °C (+140 °F)

Degree of Protection (DIN EN 60 529 / IEC 529)

IP54 in front of the panel

Blow-out Device

Blow-out plug in the back of the case

Lighting

Direct 2 light bulbs BA9s 24 V/2 W and
indirect via light slits in the case

Nominal Case Size

125 mm (5")

Wetted Parts

Connection: brass
Bourdon tube: bronze, soft soldered, c-form

Case Configuration

Position of the connection: lower back connection (r)
Mounting device: u-clamp for panel mounting (BFr)

Pressure Ranges

0 – 6, 0 – 10 and 0 – 12 bar

Process Connection

M 16x1.5 with chuck cone for cutting ring
L10 according to DIN EN ISO 8434-1

Including restrictor screw in the pressure inlet port,
orifice Ø 0.8 mm (0.03")

Window

Reflex-reduced laminated safety glass

Movement

Brass/German silver



Dial

Aluminum black, scale white, stop pin at 0 bar (zero stop)

Pointer

Aluminum, colour yellow (RAL 1016)

Safety Category According to DIN EN 837-1

S1 pressure gauges with blow-out device

Options and Special Versions

- Instruments without combi lighting, i.e. only direct lighting, only indirect lighting or unlit
- Other pressure ranges, e.g. 0 – 16 bar
- Other than vertical installation
- Process connection with cutting ring and union nut
- Other process connections upon request
- Restrictor screw brass, orifice Ø 1.0 mm (0.04"), in the pressure inlet port
- Other pointer colours, e.g. luminous bright red (RAL 3026) or white (RAL 9010)
- Dial inscription (ZA) as required, colours matching the pointer
- Coloured marks matching the pointer
- LED lighting BA9s, 18–32 V, white or green
- LED lighting BA9s for operating voltages of more than 32 V up to max. 130 V upon request

Ordering Information

Please specify in your order:

Basic model	RChg 125 – 1 Fz rBFr
Pressure range	0 – 6 bar, 0 – 10 bar, 0 – 12 bar
Process connection	L10
Specifics	see above

Example: RChg 125 – 1 Fz rBFr, 0 – 12 bar,
L10, ZA: "brake cylinder" white

www.armano-messtechnik.com

ARMANO

ARMANO Messtechnik GmbH

Location Beierfeld
Am Gewerbepark 9 • 08344 Grünhain-Beierfeld
Tel.: +49 3774 58 – 0 • Fax: +49 3774 58 – 545
mail@armano-beierfeld.com

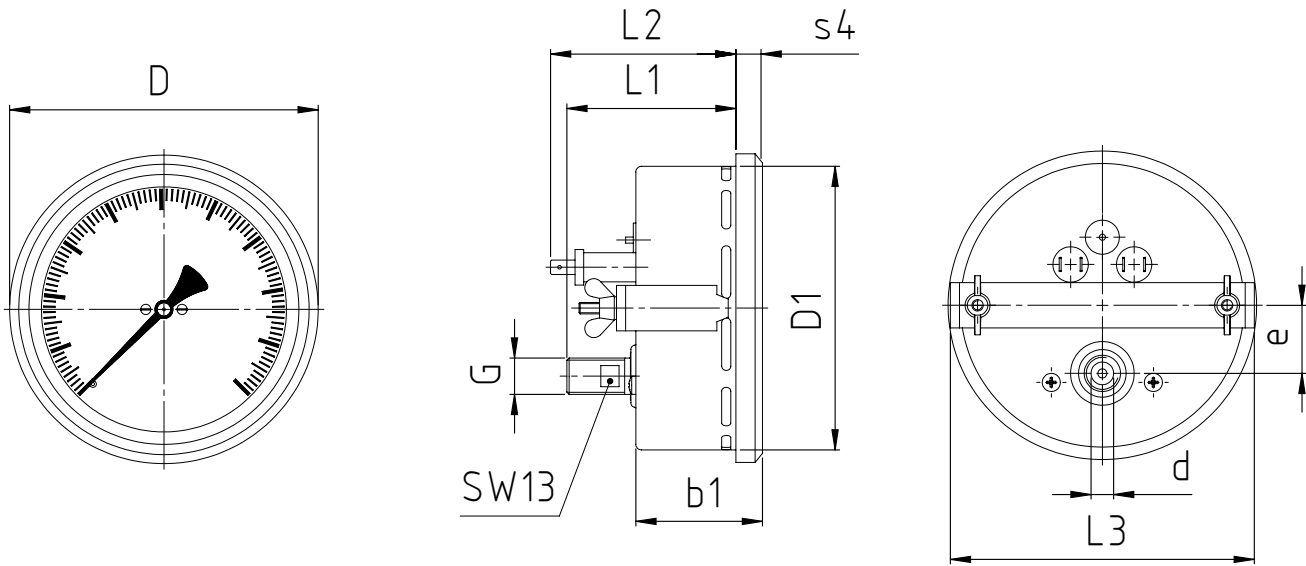
Location Wesel
Manometerstraße 5 • 46487 Wesel-Ginderich
Tel.: +49 2803 9130 – 0 • Fax: +49 2803 1035
mail@armano-wesel.com

1901.1

08/19

Case Configuration, Dimensional Data and Weight

RChg 125 – 1 Fz rBFr



Dimensional Data (mm/inch) and Weights (kg/lb)

NCS	b1	D	D1	e	process connection		L1	L2	L3	s4	SW	recommended panel cut out Ø	(approx.) weight
					DIN EN ISO 8434-1 d ^{B11 1)}	G							
125	56	136	125	30	L10	M16x1.5	74	82	134	11	13	128 ± 1	0.68
5	2.2	5.35	4.92	1.18			2.91	3.23	5.28	0.43	0.51	5.04 ± 0.04	1.5

¹⁾ Tolerance class according to ISO 286-2